

Network Video Recorder

NVR824-R-IM Series



Features

- Support Ultra 265/H.265/H.264 video formats 128/256-channel input
- Third-party IP cameras supported with ONVIF conformance: Profile S, Profile G, Profile C, Profile Q, Profile A, Profile T
- Support 2-ch HDMI, 1-ch VGA, HDMI at up to 4K(3840x2160) resolution
- HDMI1, HDMI2 and VGA independent outputs provided
- Up to 12 Megapixels resolution recording
- Redundant power supply optional
- Support HDD hot swap with RAID 0, 1, 5, 6, 10, 50, 60 storage scheme configurable
- 24 SATA HDDs, up to 16TB for each HDD
- Support 2 miniSAS Interfaces
- Support 12V power output
- ANR technology to enhance the storage reliability when the network is disconnected
- Support cloud upgrade
- Support N+1 Hot spare

Specifications

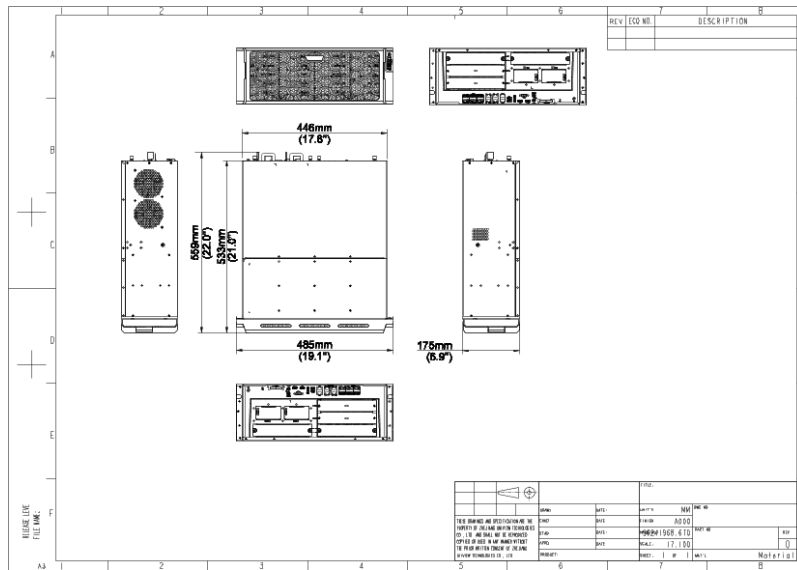
Decoding	Description
Decoding Format	Ultra 265,H.265,H.264
Decoding Capability	3 x 12MP@30, 5 x 4K@30, 20 x 1080P@30, 24 x 1080P@25, 40 x 960P@25, 45 x 720P

	@30, 54 x 720P@25, 96 x D1
Audio Compression	G.711A,G.711U
Network	Description
Incoming Bandwidth	768Mbps
Outgoing Bandwidth	768Mbps
Remote Users	128
Protocols	TCP/IP&P2P&UPnP&NTP&DHCP&PPPoE&HTTP&HTTPS&DNS&DDNS&SNMP&SMTP &NFS&RTSP&802.1x&IPV6
Browser(Plugin)	Windows:IE(IE10/11),Firefox (version 52.0 and above),Chrome(version 45 and above),Ed ge(version 79 and above)
Video/Audio Input	Description
IP Video Input	NVR824-128-R-IM-8G:128-ch NVR824-256-R-IM-16G:256-ch
RCA Audio Input	1-ch
Video/Audio Output	Description
HDMI Output	HDMI1/HDMI2:4K(3840x2160)/30Hz, 1920x1080p/60Hz, 1920x1080p/50Hz, 1600x1200/ 60Hz, 1280x1024/60Hz, 1280x720/60Hz, 1024x768/60Hz
VGA Output	VGA:1920x1080p/60Hz, 1920x1080p/50Hz, 1600x1200/60Hz, 1280x1024/60Hz, 1280x72 0/60Hz, 1024x768/60Hz
RCA Audio Output	1-ch
Liveview Display	VGA:1/4/6/8/9/16/25/36, HDMI1/HDMI2:1/4/6/8/9/16/25/36/64
Corridor Mode Screen	3/4/5/7/9/10/12/16/32
Two-way Audio	Description
Two-way Audio	1-ch,RCA(Using the audio input and output)
Snapshot	Description
FTP/Schedule/Event Snapshot	128-ch snapshot, up to 4K resolution
Recording	Description
Recording Resolution	12MP/8MP/6MP/5MP/4MP/3MP/1080P/960P/720P/D1/2CIF/CIF
Synchronous Playback in Local	16-ch
Smart	Description
VCA Detection by IPC	Vehicle Detection&SIP(Intrusion Detection,Cross Line Detection,Enter Area,Leave Area)& Ultra Motion Detection(UMD)&Temperature Detection(Fire Detection,Smoking Detection, Temperature Measurement,Smoke and Fire Detection)&People Counting(People Flow Co unting,Crowd Density Monitoring)&Video Metadata&Traffic Monitoring
Smart by NVR	Smart Intrusion Prevention (SIP)&Video Metadata&(At same channel, only one smart func tion by NVR can be enabled simultaneously.)
VCA Search	Motor Vehicle Search&Non-Motor Vehicle Search &General Search&People Counting Report
Smart by IPC	Total 64- ch(Vehicle Detection,Temperature Detection,SIP,UMD,Video Metadata,Traffic Monitoring)
Search by Image	Support
Vehicle Picture Library	Up to 5 vehicle picture libraries,with up to 25,000 vehicle pictures in total
SIP by NVR	NVR824-128-R-IM-8G:64-ch NVR824-256-R-IM-16G:128-ch

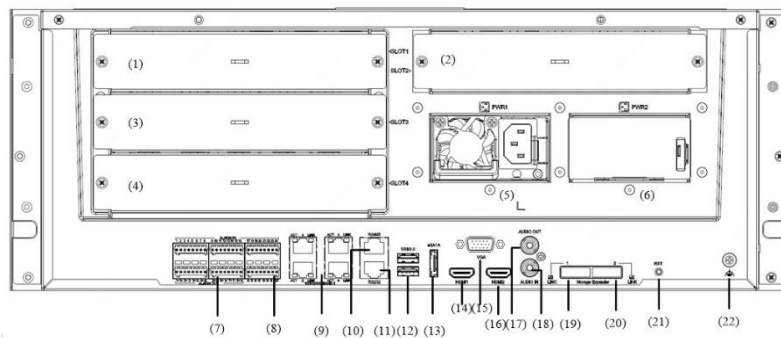
UMD by NVR	NVR824-128-R-IM-8G:64-ch NVR824-256-R-IM-16G:128-ch
Video Metadata by NVR	NVR824-128-R-IM-8G:64-ch NVR824-256-R-IM-16G:128-ch
Video Metadata Type by NVR	Motor Vehicle: Vehicle Color, Vehicle Type, Vehicle Brand, Direction. Non-Motor Vehicle: Non-Motor Vehicle Type, Direction, Gender, Age, Upper Garment Length.
Alarm	Description
General Alarm	Defocus Detection&Scene Change Detection&Object Left Behind&Object Removed&Auto Tracking&Motion Detection&Tampering &Video Loss Alarm Input&Audio Detection
Alert Alarm	IP Conflict&Network Disconnected&Disk Offline&Disk Abnormal&Illegal Access&Hard Disk Space Low&Hard Disk Full&Recording/Snapshot Abnormal&High CPU Temperature&High Motherboard Temperature&Array Damaged&Array Degraded
Hard Disk	Description
SATA	24 SATA interfaces
Capacity	Up to 16TB for each disk(The maximum HDD capacity varies with environment temperature)
Disk Group	Support
Redundant Storage	Support
Disk Array Type	RAID 0,1,5,6,10,50,60
External Interface	Description
Network Interface	4 RJ45 10M/100M/1000M self-adaptive Ethernet Interface
USB	Front panel: 2 x USB2.0&Rear panel: 2 x USB3.0
RS485	1
RS232	1
Alarm In	24-ch
Alarm Out	8-ch
eSATA	1
miniSAS	2
Power Output	12V
Power Supply	AC 100~240V
Power Switch	Support
Redundant Power Supply	Support
Working Environment	Description
Working Temperature	-10° C ~ + 50° C (+14° F ~ +122° F)
Working Humidity	≤ 90% RH (non-condensing)
Power Consumption (without HDD)	≤ 300W
Dimensions	Description
Weight (without HDD)	≤ 12.5Kg (27.56lb)
Height	4U
Dimensions	NVR824-128-R-IM-8G:533mm × 482mm × 131.0mm (21.0" × 19.0" × 5.1")

	NVR824-256-R-IM-16G:484.6mm × 533mm × 175.5mm (19.1"×21.0"×6.9")
Certification	Description
Certification	CE, FCC, UL, RoHS, WEEE
CE	EN 55032, EN 61000-3-3, EN IEC 61000-3-2, EN 55035
FCC	Part15 Subpart B

Dimensions



Rear Panel



(1) Slot1	(2) Slot2	(3) Slot3
(4) Slot4	(5) Power Supply 1	(6) Power Supply 2(optional)
(7) Alarm in/out	(8) 12V DC Output	(9) Network Interface
(10) RS485	(11) RS232	(12) USB3.0
(13) eSATA	(14) HDMI1 Output	(15) VGA Output
(16) HDMI2 Output	(17) Audio Output	(18) Audio Input
(19) miniSAS	(20) miniSAS	(21) RST
(22) GND		

Zhejiang Uniview Technologies Co., Ltd.

No. 369, Xietong Road, Xixing Sub-district, Binjiang District, Hangzhou City, 310051, Zhejiang Province, China

Email: overseasbusiness@uniview.com; globalsupport@uniview.com

<http://www.uniview.com>

©2023 Zhejiang Uniview Technologies Co., Ltd. All rights reserved.

*Product specifications and availability are subject to change without notice.